

sero✓

Concept mapping-based
assessments

Get deeper insights into student thinking!



Learning isn't linear...

When you learn, your brain makes connections between concepts.

This cognitive process of recognizing, testing, and assimilating new relationships is key to human understanding and long-term knowledge retention.



...so why is the way we assess it?

Conventional multiple-choice tests are best at assessing students' recall of facts.

Their format treats knowledge as distinct and separate items, rather than interconnected pieces of a bigger picture.

- 1.
- 2.
- 3.
- 4.



sero Dashboard Workspace Instructions Username [Log out](#)

Assignments My Maps

Name	Due	Status
Trig II	05/29/20	Graded 16/40
What is COVID-19?	-	Incomplete
Passage 4/A	06/02/20	Incomplete
Passage 4/B	06/02/20	Incomplete
Ideas for Presentation	-	Submitted
Remote work mapping	-	Submitted
How should we structure L...	-	Submitted
Asymptotes	05/29/20	Graded 17/20
Power equations	05/29/20	Graded 19/20
Estimating the slope	05/29/20	Graded 19/20

*** What is COVID-19? last saved at 2:52pm Time remaining: 00:17:58 Instructions Save Submit

WORD BANK WHO declaring a public health emergency Pneumonia-like symptoms Had not been doing extensive testing Deadly MERS-CoV Cause for concern

Multiple choice
This is a multiple-choice question. Choose the correct answer from the options provided to fill in the map.

Guangdong Province, China
 Wuhan, China

Sero! is an award-winning platform that uses concept mapping to assess learning.

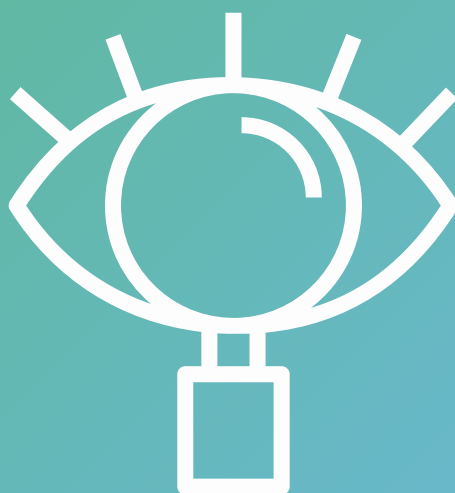
It facilitates big-picture comprehension and gives educators deeper insight into students' higher order thinking.

**"This tactile and visual tool
challenges kids to think critically
about big ideas."**

Common Sense Education

Deeper Insights

Concept mapping tasks use mental models to engage students' knowledge of the relationships between concepts—which is difficult to assess by other means—allowing for more precise diagnoses of learning gaps.



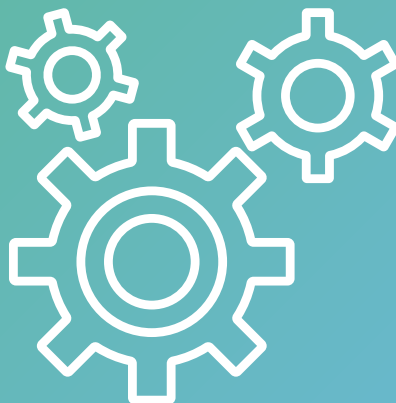
"I've not seen anything like this."

Middle School Teacher

Teacher Tools

Sero! accelerates the assessment authoring, scoring, and analytics processes, saving teachers time and empowering them with immediately-actionable insights.

Sophisticated individual and group-performance reporting allows for better data-driven instruction.



"Several steps above the typical multiple choice assessment."

Common Sense Education

Version 2.0

Sero!'s intuitive interface guides teachers and learners through several concept-mapping activities that fit different assessment needs.

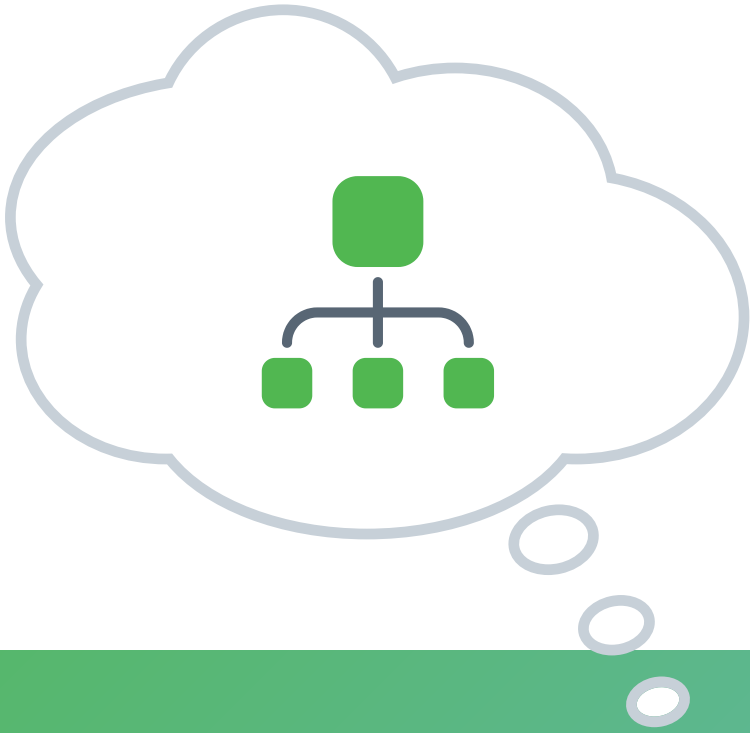
And Sero!'s cloud-based architecture comes ready for integration with other learning technologies.



Try Sero! for free

Visit serolearn.com





Contact Us



Brian Moon
brian@serolearn.com